

Networks

Digital Networks

digital™



PRODUCT CATALOG — WINTER 2001



Digital

CURRENT PRODUCT PORTFOLIO

DIGITAL NETWORKS

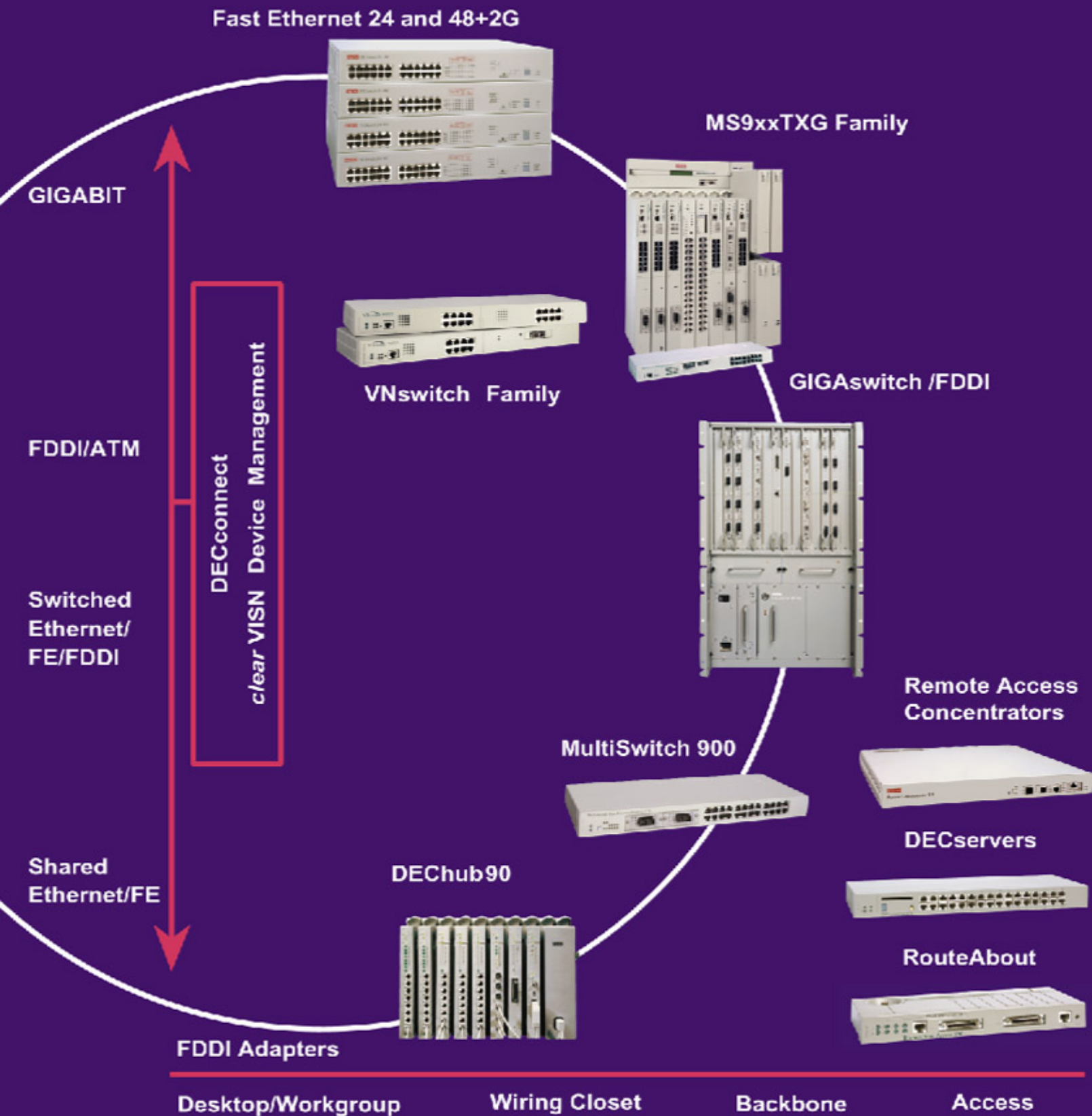


Table of Contents

MultiSwitch 900 Product Family	2
MS900 Backplane Connectivity Matrix	3
VNswitch 900 Product Family	4
MultiSwitch Fast Ethernet 924 TXG	5
MultiSwitch Fast Ethernet Hub 924TX	5
New Access Concentrator 200	6
DECserver Family	7
RouteAbout Product Family	8
clearVISN	9
New FE Switch 24+2G	9
New FE Switch 48+2G	10
DEChub 90	10
FDDIcontroller/PCI Adapters	11
GIGAswitch/FDDI	11
DECconnect Systems Interconnect Products . .	12
Digital Networks Support Services	12

We are proud to present to you our *first* issue of the Digital Networks Catalog!

In this catalog you will find features, descriptions and pricing on the top selling Digital-branded products, including the MultiSwitch 900, GIGAswitch/FDDI, VNswitch 900, DEChub 90, DECserver, and the well-known intuitive easy to use management application, *clearVISN*.

We have also launched two new product lines: the Fast Ethernet Workgroup Switch family and the Access Concentrator Family. All the product information can be found in the catalog and in more detail on our website.

Digital Networks is also the exclusive source for the award-winning Digital-branded products that are only offered through our channel partners. We are 100% Channel focused.

Protecting customer investments is a core value at Digital Networks. We will continue offering the highest quality products and services, while responding to our customers and partners with the speed, agility, and creativity of a start-up.

Our Philosophy at Digital Networks:

- Protect our customers' investments in their Digital Networks products
- Provide increased opportunities to our partners through a higher level of support
- Continue building our business with excellent products and services, a well-established worldwide distribution channel, and an experienced and highly skilled work force

As always, we value your comments. Feel free to email us at digitalproducts@dnpg.com or contact us on the Digital Networks Hotline 1.877.341.9594, outside the U.S. at 1.978.684.1258 or visit www.dnpg.com.

Regards,

The Digital Networks Team

MultiSwitch 900 Product Family

Multigigabit switching across all technologies

Features

- Multi-technology backplane supporting Ethernet, Fast Ethernet, FDDI, ATM, and 400mbps VNbus
- Firmware upgradeable allowing support for the latest technology and LAN support without concern for obsolescence
- Hot swappable, full N+1 power system maximizes uptime for your network
- Web based manageability through *clearVISN*

This flexible, multigigabit switching system delivers a broad range of network solutions--from simple, shared LAN connectivity to high-speed multi-technology switching. Its unique software-definable backplane provides a high performance, distributed switching fabric for the seamless integration of Ethernet, Fast Ethernet, Gigabit Ethernet, FDDI and ATM, as well as WAN technologies and Access Servers. The MultiSwitch 900 also supports three 400mbps backplane channels that enable any-technology to any-technology switching.

The MultiSwitch 900 has 2 chassis, both of which offer the same high performance capabilities.

See it on the web at:

www.dnpg/dr/npg/dmhub-mn.html



MultiSwitch 900 8 and 4 slot comparison

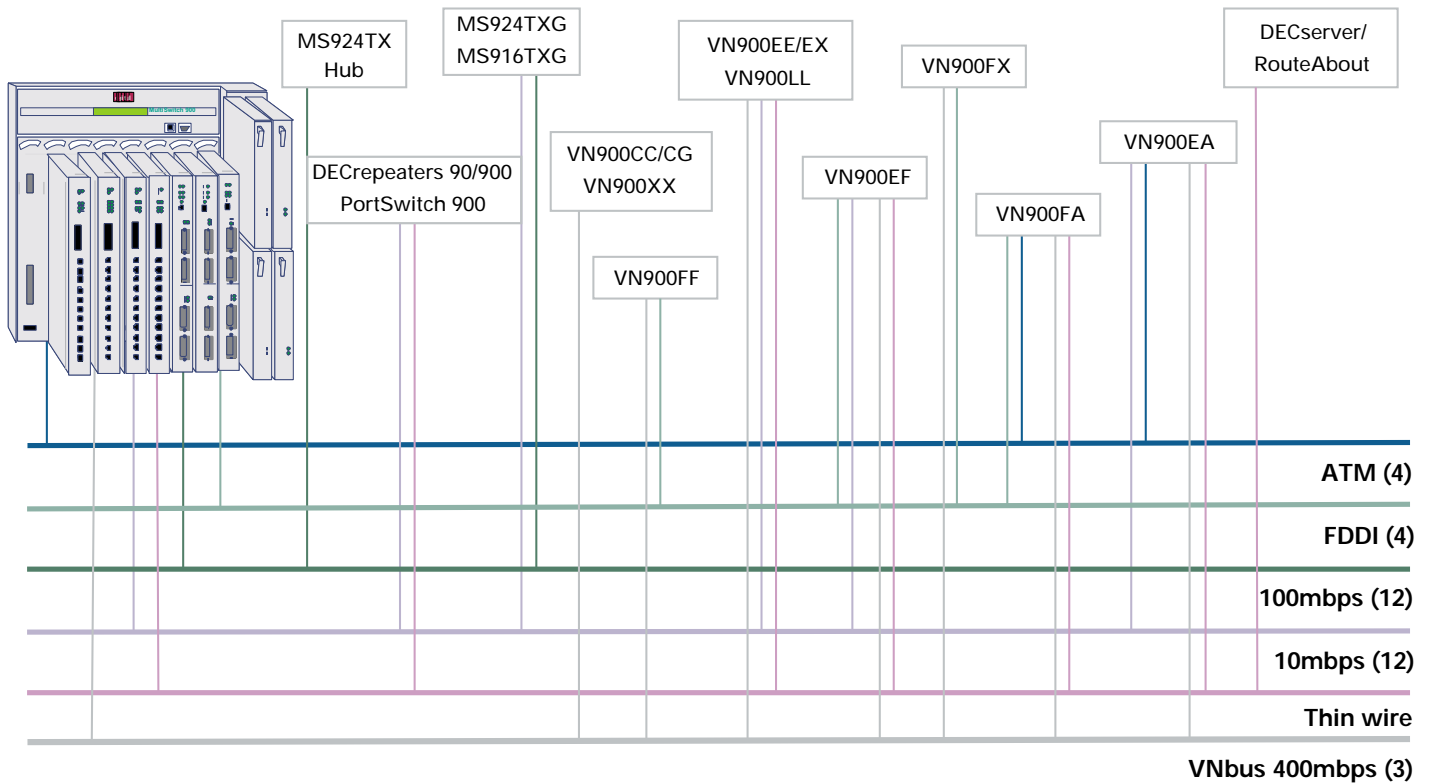
	MS900 Modules	DEChub 90 Modules	10 mbs	100 mbs	FDDI	ATM	VNbus
8 Slot Chassis	yes	yes	12	12	4	4	3
4 Slot Chassis	yes	no	12	12	4	4	2

Ordering Information

	Part #	Description	List Price
8 Slot Chassis	DMHUB-AA	MultiSwitch 900 8 slot chassis with 1 power supply and wall rack mount kit.	\$3,600
	H7894-MA	Redundant power for 8 slot chassis (163w)	\$1,015
4 Slot Chassis	DLHUB-AA	MultiSwitch 900 4 slot chassis	\$2,695
	DLTDM-MA	Redundant management module for 4 slot chassis	\$995
	H7898-MA	Redundant power supply for 4 slot chassis	\$1,295
	H7896-MA	Rack mount kit for 4 slot chassis	\$350
1 Slot Chassis	DEHUA-**	DEChub ONE for stand-alone Ethernet	\$500
	DEF1H-**	DEChub ONE MX for stand-alone FDDI	\$820
Fast Ethernet	DFETX-MA	MultiSwitch 924TXG, 24 port 10/100 switch with 1 modular Gigabit Ethernet port	\$4,495
	DFETX-MB	MultiSwitch 916TXG, 16 port 10/100 switch with 2 modular Gigabit Ethernet ports	\$4,295
	DLMT2-MA	MultiSwitch 924TX Repeater, 24 port 100BaseTX repeater, 2 additional modular ports supporting TX or FX connections	\$3,500
Ethernet	DETPX-MA	PORTswitch 900TP/12, 32 port 10BaseT Ethernet PORTswitch with 12 internal LAN segments	\$4,495
	DEFMM-MA	PORTswitch 900FP, 12 10BaseFL/FOIRL (ST) ports with 6 Internal LAN segments	\$5,990
	DEFBA-MA	DECswitch 900EF, 6 port Ethernet to FDDI switch. Ethernet Ports: 4 10BaseT (RJ45), 2 15 pin sockets, 1 DAS FDDI	\$5,995
	DETMM-MA	DECRepeater 900TM, 32 port 10BaseT repeater (RJ45)	\$3,065
FDDI	DEF6X-MA	DECconcentrator 900MX, 6 modular front panel ports, 2 backplane connection ports	\$3,690
	DEFHM-MX	DECconcentrator 900FH, 2 modular ports and 12 MMF (SC) front panel ports, 2 backplane connection ports	\$9,950
	DEFHM-MM	DECconcentrator 900FH, 2 fixed ANSI and 12 MMF (SC) front panel ports, 2 backplane connection ports	\$10,950
	DEFHU-MX	DECconcentrator 900 TH, 2 modular ports and 12 fixed UTP front panel ports, 2 backplane connection ports	\$6,150
	DEFHU-MM	DECconcentrator 900 TH, 2 fixed MMF ports and 12 fixed UTP front panel ports, 2 backplane connection ports	\$7,200
Modular Media Interfaces	DGMMF-AA	Gigabit Ethernet 1000BaseSX MMF connector (550m)	\$495
	DGSMF-AA	Gigabit Ethernet 1000BaseLX SMF connector (10km)	\$1,295
	DEXYM-AA	Fast Ethernet MMF with SC connector	\$795
	DEXYU-AA	Fast Ethernet UTP-5 (RJ45)	\$495
	DEFXM-SC	FDDI MMF with SC connector	\$425
	DEFXM-AA	FDDI ANSI MMF with MIC connector	\$513
	DEFXS-BA	FDDI SMF with SC connector	\$3,588
	DEFXU-BA	FDDI UTP copper (RJ45)	\$256

MS900 Backplane Connectivity Matrix

(Web based Management using *clearVISN*)



The MultiSwitch 900 backplane was designed for true investment protection. With its unique open technology, 5.6 Gb/s distributed switching fabric, the Digital Networks MultiSwitch 900 system delivers support for both packet and cell-based technologies. And thanks to a software-definable, multitechnology backplane, all it takes is a simple click of the mouse to reconfigure your network adding 10 or 100mbps Ethernet channels along side FDDI, ATM or the VNbus LANs. You can also smoothly migrate from shared to switched networking since the backplane supports a wide variety of shared hub, switches, access server and routing products without compromise or complications. In fact, all existing Digital Networks' 90/900 series products are fully supported by the MultiSwitch 900 system as seen in the diagram above.

VNswitch 900 Product Family

High performance, multi-technology switching

Features

- Provides seamless technology migration and integration across Ethernet, Fast Ethernet, FDDI, ATM, and Gigabit Ethernet
- Layer 3 IP routing and line rate layer 2 switching regardless of technology
- Maximizes network configuration flexibility by supporting a wide variety of modular cable media options for Fast Ethernet, ATM, FDDI, and Gigabit Ethernet
- Supports chassis-based and stand-alone configurations using either the 8 and 4 slot chassis or the DEChub ONE

The VNswitch 900 product family of multi-layer, multi-technology enterprise-class switches is designed to provide layer 2 switching and layer 3 IP routing to the wiring closet. When combined with the MultiSwitch 900 chassis, multiple VNswitch 900s can be connected together by one of three 400mbps backplane channels called the VNbus. The VNbus provides a non-blocking, very low latency, multi-gigabit distributed switching fabric across the MS900 backplane, which delivers maximum data throughput across multiple technologies.

See them on the web at:

www.dnpg/dr/npg/dvnex-mn.html

www.dnpg/dr/npg/dvncc-mn.html



Ordering Information

	Part #	Description	List Price
	DVNCC-MA	VNswitch 900CC, 16 switched Fast Ethernet ports	\$5,495
	DVNCC-PA	VNswitch 900CC 3 pack	\$12,995
	DVNCG-MX	VNswitch 900CG, 1 modular Gigabit Ethernet port, 8 switched Fast Ethernet ports	\$5,500
	DVNEA-MX	VNswitch 900EA, 1 modular port switched ATM, 12 ports switched 10BaseT Ethernet	\$9,515
	DVNEE-MA	VNswitch 900EE, 24 ports switched 10BaseT Ethernet	\$8,995
	DVNEE-PA	VNswitch 900EE 3 pack	\$14,995
	DVNEF-MM	VNswitch 900EF, 1 port switched FDDI (fixed ANSI MMF) 12 ports 10BaseT Ethernet	\$10,195
	DVNEF-MX	VNswitch 900EF, 1 modular port switched FDDI, 12 ports Switched 10BaseT Ethernet	\$8,840
	DVNEX-MX	VNswitch 900EX, 2 modular switched Fast Ethernet ports, 12 switched 10BaseT ports	\$6,375
	DVNFA-MX	VNswitch 900FA, 1 port switched FDDI, 1 port switched ATM	\$10,710
	DVNFF-MX	VNswitch 900FF, 2 modular switched FDDI ports	\$11,795
	DVNFX-MX	VNswitch 900FX, 2 modular switched Fast Ethernet ports, 1 modular switched FDDI port	\$9,795
	DVNLL-MA	VNswitch 900LL, 12 ports switched 10BaseFL Ethernet (ST type connections), 12 additional internal Ethernet Lanes	\$10,200
	DVNXA-MX	VNswitch 900XA, 1 switched ATM port, 2 modular Switched Fast Ethernet ports	\$7,480
	DVNXX-MX	VNswitch 900XX, 4 modular switched Fast Ethernet ports	\$4,995
	DVNXX-PA	VNswitch 900XX 3 pack	\$9,990
Modular Media Interfaces	DGMMF-AA	Gigabit Ethernet 1000BaseSX MMF GBIC (550m)	\$495
	DGSMF-AA	Gigabit Ethernet 1000BaseLX SMF GBIC (10k)	\$1,295
	DEXYU-AA	Fast Ethernet UTP-5 (RJ45)	\$495
	DEXYM-AA	Fast Ethernet MMF w/SC connector	\$795
	DEFYU-AA	FDDI UTP-5 with RJ45 connector	\$595
	DEFYM-AA	FDDI MMF with SC connector	\$795
	DEFYS-AA	FDDI SMF with SC connector	\$3,495
	DAGGM-AA	ATM 155mbps SONET/SDH MMF	\$800
	DAGGS-AA	ATM 155mbps SONET/SDH SMF	\$3,500
	DAGGU-AA	ATM UTP/ScTP SONET/SDH	\$700

Features

MS924TXG

- 24 10/100 ports (RJ45)
- 1 modular Gigabit Ethernet port
- MultiSwitch 900 Fast Ethernet backplane support
- 4.2 Gbps internal switching fabric
- IEEE 802.1Q/p compliant
- Port Trunking

MS916TXG

- 16 10/100 ports (RJ45)
- 2 modular Gigabit Ethernet ports
- MultiSwitch 900 Fast Ethernet backplane support
- 4.2 Gbps internal switching fabric
- IEEE 802.1Q/p compliant
- Web based management using *clearVISN* or embedded web browser

MultiSwitch Fast Ethernet 924TXG AND 916TXG

High-density switched Fast Ethernet with Gigabit uplinks

The MultiSwitch 924TXG and MultiSwitch 916TXG bring high-density switched Fast Ethernet with Gigabit Ethernet uplinks to the MultiSwitch 900 platform.

Using the 12 Fast Ethernet channels across the MultiSwitch 900 backplane, the MultiSwitch 924TXG and MultiSwitch 916TXG enable MultiSwitch 900 users to tie in their existing Ethernet and Fast Ethernet repeaters and port switches and allocate bandwidth. Both switches are IEEE 802.1Q and 802.1p compliant, offering industry-standard VLAN and priority queuing support.

As with all MultiSwitch 900s, both switches can be used as a stand-alone with the DEChub ONE or modular in either the 8- or 4-slot MultiSwitch 900 chassis.

See them on the web at:

www.dnpg.com/dr/npg/dfetx-ma-mn.html

www.dnpg.com/dr/npg/dfetx-mb-mn.html



Ordering Information

Part #	Description	List Price
DFETX-MA	MultiSwitch Fast Ethernet Switch 924TXG, 24-port 10/100, 1 modular Gigabit Ethernet port	\$4,495
DFETX-MB	MultiSwitch Fast Ethernet Switch 916TXG, 16-port 10/100, 2 modular Gigabit Ethernet ports	\$4,295
DGMMF-AA	1000Base-SX Modular GBIC (550m)	\$495
DGSMF-AA	1000Base-LX Modular GBIC (10k)	\$1,295

Features

- 24 shared Fast Ethernet ports per module (RJ45)
- Competitive per-port pricing
- Installs in seconds
- Maximizes uptime with hot-swap capability
- SNMP management, IP services, and low-cost management with *clearVISN* management software
- MultiSwitch900 backplane connectivity with 12 user-defined Fast Ethernet backplane channels

MultiSwitch Fast Ethernet Hub 924TX

Shared Fast Ethernet for the MultiSwitch 900

The MultiSwitch Fast Ethernet Hub 924TX brings high-density shared Fast Ethernet to the versatile MultiSwitch 900 at a very low cost per port.

Featuring 24 ports of Fast Ethernet, plus two expansion slots, this fully featured hub lets you use port group switching to segment networks and allocate bandwidth efficiently. The Hub 924TX provides SNMP management and IP services. Like all other MultiSwitch 900 modules, it installs in seconds and offers hot-swap capability. It also provides easy, low-cost management via *clearVISN* management software.

See it on the web at:

www.dnpg.com/dr/npg/dlmt2-mn.html



Ordering Information

Part #	Description	List Price
DLMT2-MA	MultiSwitch Fast Ethernet Hub 924TX, 24-port 100Base-T hub, 2 modular FX ports	\$3,500
DEXYM-AA	100BaseFX modular media interface (MMI) with SC connector	\$795

Features

- Supports 2 ISDN PRI (T1/E1) ports and up to 48/60 simultaneous V.90 56K modem connections
- Supports IP application-aware security policies and flow accounting to track and control remote access for TCP/IP applications
- Provides true user-based Access Control Policies
- Redundant power supplies standard

The Access Concentrator 200 provides high-density, universal dial-up (ISDN or modem) remote access call termination.

The Access Concentrator 200 by itself is a fully functional, easy to configure remote access concentrator that can connect telecommuters, traveling or mobile workers, or small offices/home offices to a central site. When coupled with the optional Connection Services Manager (CSM) application, the Access Concentrator 200 provides the network administrator with an unprecedented level of control. With CSM installed, the Access Concentrator 200 becomes IP layer 4 "flow-aware." By applying flow policies at the user level, the network administrator can confidently deploy secure and accountable remote access to network resources. CSM allows connects to be monitored, audited, reported, and controlled at the application (e.g., FTP, HTTP, SMTP etc.) per user or group.

See it on the web at:

www.dnpg/dr/access_concentrator/ac_248.html



Ordering Information

Part #	Description	List Price
DERAC-48	Stackable 2T1/PRI, 48 V.90 modems, 10baseT, redundant power	\$11,500
DERAC-60	Stackable 2E1/PRI, 60 V.90 modems, 10baseT, redundant power	\$13,500
QB-CSMAA-AA	Connection Services Manager	\$4,000

Features

- Multi-protocol support for IP, IPX, and AppleTalk networks
- Models available with 8 ports to 32 ports for stand-alone, DEChub, or rack-mount environments
- Asynchronous port speeds to 115.2Kbps for performance-intensive asynchronous applications
- LAT, Telnet, Rlogin, TN3270, and DNS support for terminal-to-host connections
- Reverse LAT, LPD, Telnet listener/server, raw TCP listener/server for serial printing and device serving
- PPP, CSLIP, SLIP, and AUTOLINK automatic port configuration for dial-up remote access
- Wide array of authentication features including PAP, CHAP, RADIUS Kerberos V4, and SecurID
- DHCP and WINS Auto-configure provide automatic and reliable distribution of IP addresses
- Models available with pre-loaded FLASH RAM allow booting where load host is not available
- Management support via Windows GUI, command line interface, or SNMP
- All models include Network Access Software CD-ROM with firmware, documentation, and utilities files

The DECserver family of multi-protocol asynchronous device servers--the DECserver 90M, DECserver 700-16 and DECserver 900TM--provides an ideal solution for connecting terminals, serial printers, modems, barcode readers, scanners, point-of-sale terminals, laboratory instruments, numerically controlled factory equipment, or device console ports to an Ethernet network. The DECserver offers the right mix of performance, features, reliability, and manageability to support an array of applications including factory and laboratory automation, retail point-of-sale, telecommuting, legacy terminal-to-host, and console port management.

See them on the web at:

www.dnpg.com/dr/npg/dsrvw-mn.html

www.dnpg.com/dr/npg/dsrvh-mn.html

www.dnpg.com/dr/npg/dsrvz-mn.html



	DECserver 90M	DECserver 700 - 16	DECserver 900TM
Ports/Connectors	8 ports / MJ8 (RJ45)	16 ports / MJ8 (RJ45)	32 ports / MJ8 (RJ45)
Performance Asych/LAN	57.6Kbps / 10MB Ethernet	115.2Kbps / 10MB Ethernet	115.2Kbps / 10MB Ethernet
Control Signals	DTR/DSR	CTS,RTS,DTR,DSR or RI,DSRS,DTR,DCD software selectable	CTS,RTS,DTR,DSR or RI,DSRS,DTR,DCD software selectable
Flash RAM	Onboard Flash	Order with or without Flash RAM Card	Order Flash RAM card separately
LAN Connection	DEChub 90, MultiSwitch 900, 10Base-T, ThinWire	AUI, 10Base-T	MultiSwitch 900 or AUI with DEHUA docking station
Environment	DEChub or stand-alone tabletop	Stand-alone: tabletop or rackmount	MultiSwitch 900, stand-alone via docking station

Ordering Information

Part #	Description	List Price
DSRVH-RA	DECserver 90M Access Server with 2MB FLASH (stand-alone)	\$1,527
DSRVH-PA	DECserver 90M Access Server with 2MB FLASH (hub version)	\$1,389
DSRVW-GA	DECserver 700-16 no FLASH for U.S./Canada	\$3,377
DSRVW-GC	DECserver 700-16 with factory installed FLASH card for U.S. Canada	\$4,090
DSRVZ-MC	DECserver 900TM network access server	\$4,915
DEHUA-CA	DECserver 900TM docking station	\$500
H8585-AA	DB9 to MJ8 console port adapter for PC serial port	\$11
BN25G-03*	Patch cord for console port connections	\$7
H0345-AA	Flash card for DECserver 700/900TM	\$815

* -03 denotes cable length in meters. Other lengths are available.

Features

- Effortlessly and economically links branch offices to network resources via leased line, switched public services, or Internet connections
- Lowers transmission costs and optimizes bandwidth with advanced Telesavings features
- Provides full protocol support handling all major protocols in today's networks.

The RouteAbout Family features four high-performance routers for wide area network access and shared LAN Internet access. Built to support all major network protocols, the RouteAbout Family also provides the cost savings, bandwidth management, and interoperability of Digital Networks Distributed Routing Software.

See them on the web at:

www.dnpg.com/dr/npg/dex2r-mn.html

www.dnpg.com/dr/npg/dezfm-mn.html

www.dnpg.com/dr/npg/dezpr-mn.html



RouteAbout Family Functionality Matrix

Model	RouteAbout Access EW	RouteAbout Access EI	RouteAbout Central EW	RouteAbout Central EP
I/O Configuration	1 Ethernet, 2 WAN	1 Ethernet 1 WAN, 1 BRI		2 Ethernet, 4 WAN, 2 PRI
ISDN	No	Yes		Yes
Frame Relay, X.25	Yes	Yes	2 Ethernet, 8 WAN	Yes
IP, IPX, AppleTalk, DECnet, Bridging, X25 Relay	Yes	Yes	No Yes Yes	Yes
Multilink PPP, Split B channel, dial-on-demand data compression, IPX spoofing, bandwidth reservation, Call back Triggered RIP	Yes	Yes	Yes	Yes

Ordering Information

Part #	Description	List Price
DEX2R-DA	RouteAbout Access EW with Multi-protocol software for stand-alone use	\$1,950
DEX2R-MA	RouteAbout Access EW with Multi-protocol software for use in DEChub chassis	\$1,825
DEXBR-DA	RouteAbout Access EI with Multi-protocol software for stand-alone use	\$1,950
DEXBR-MA	RouteAbout Access EI with Multi-protocol software for use in DEChub chassis	\$1,825
DEZ8R-RB	RouteAbout Central EW with Multi-protocol software for use in the MultiSwitch 900	\$7,995
DEZPR-RB	RouteAbout Central EP with Multi-protocol software for use in the MultiSwitch 900	\$8,995

For other models visit us on the web at www.dnpg.com

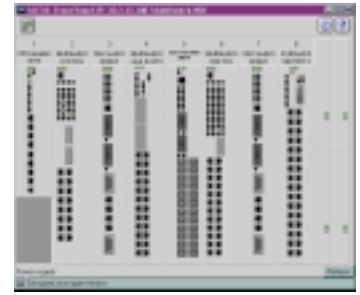
Features

- Web-style management allows the MultiSwitch 900 to be managed from anywhere using common web browsers
- Simple moves, adds, and changes with graphical, point-and-click interface from a PC or UNIX workstation
- Distributed intelligent agents move fault monitoring to the network devices themselves, reducing polling overhead and improved response time
- Protects investments by integrating easily with popular enterprise network management systems on Windows 95, 98, NT and UNIX

clearVISN

Policy-based device management to eliminate downtime

clearVISN is the most comprehensive device management product set for Digital Networks' devices. This family of applications reduces cost of network ownership while increasing network availability. The integrated product set uses a common device database and a common look and feel, reduced setup time and training cost. *clearVISN* puts high-level network control at your fingertips – simplifying configuration and management of complex devices and technologies, while delivering a clear picture of vital network data.



Version 3.1 now allows the network manager to manage devices on the network from anywhere using just a web browser. It also has added device management support for a number of new MultiSwitch 900 devices, including the MultiSwitch 924TXG and 916TXG, also the VNswitch 900CC, 900CG, and 900GV, FE Switch 24+2G and 48+2G. As new DNPG products are released, *clearVISN* will be there!

For specific ordering information, visit us on the web at: www.dnpg.com/products/

FE Switch 24+2G

High performance stackable switching with a lifetime warranty

Features

- **Flexibility**
 - Low cost stand-alone/stackable switch
 - Stack manageable as a single entity
 - Meets connection requirements: 100BASE-X and 100BASE-FX
- **Management**
 - Embedded Management
 - clearVISN* Web Management Suite
- **Performance**
 - 8.8 Gbps Switching Fabric
 - 6.55 → 26.2 Mpps
- **Lifetime Warranty**

The FE Switch 24+2G is a managed 24-port 10/100 switch. It can be used in a stand-alone configuration or can be stacked up to four units high to form a single logical switch with up to 100 ports, providing enough bandwidth for the most demanding environment. The FE Switch 24+2G offers an optional 100 Mbps fiber module for connecting to a remote site or a Gigabit module for a high-speed backbone connection.

The FE Switch 24+2G employs a high-speed switching fabric, which allows for simultaneous transport of multiple packets at low latency on all ports. It also features full-duplex capability on all ports.

The RMON/SNMP Web Management Module provides a broad range of management options. It includes a standards-compliant SNMP agent and it also supports RMON for Statistics, History, Alarm, and Event Groups.

Network management can be performed in-band using TCP/IP or Telnet connection to the serial console port on the Management Module. This module also includes a built-in Web agent that provides management access via common http browsers. The console port allows out-of-band management using a PC, terminal, or modem connection.



In addition to its embedded web-based management, The FE Switch 24+2G works with Digital Networks' *clearVISN* Web Management Suite. *clearVISN* integrates easily with popular enterprise network management systems on Windows 95, 98, NT and UNIX.

See it on the web at: www.dnpg.com/dr/feswitch

Ordering Information

Part #	Description	List Price
DST24-2G	FE Switch 24+2G, Stackable	\$1,695
DMGMT-AA	Management Module	\$295
DSMGT-AA	FE Switch 24+2G – 1 Switch with 1 Management	\$1,795
DSTAK-AA	Stack Interconnect Module	\$395
DSFE1-FX	100BASE-FX SMF Uplink Module	\$1,495
DSFE2-FX	100BASE-FX 2 MMF Uplink Module	\$595
DSGBE-LX	1000BASE-LX SMF Uplink Module	\$1,595
DSGBE-SX	1000BASE-SX MMF Uplink Module	\$695
DRPS1-AA	Redundant Power	\$595

High performance, industry standard, variety of management options, and a lifetime warranty

Features

- **High Performance**
 - 16 Gbps switching fabric and up to 10 million packets per second forwarding rate (for 64-byte packet)
 - Wire speed for each 10/100 and 1000BASE ports
 - 12K MAC Addresses, Auto-negotiation
 - Advanced VLAN support: up to 256 VLANs
 - Latency: Under 10 microseconds for minimum packet lengths at 100 Mbs
- **Compatibility**
 - IEEE 802.1D Bridging/Spanning Tree
 - IEEE 802.1Q VLAN Tagging
 - IEEE 802.1p Priority Queuing
 - IEEE 802.3x Full Duplex Flow Control
- **Manageability**
 - clearVISN* Web Management Suite
 - On-board Management
- **Flexibility**
 - Highly competitive price per port
 - 10/100 and 1000BASE connectivity
 - Redundant Power
- **Lifetime Warranty**

A manageable, stand-alone 48-port switch, the FE Switch 48+2G connects workstations and other network devices on networks of all sizes.

Software management for the FE Switch 48+2G is accomplished with Digital Networks' *clearVISN* Web Management Suite, which enables control on both a per-port and per-switch basis. *clearVISN* provides a common interface for Digital Networks hubs, switches, and routers, and it integrates with popular enterprise network management systems on Windows 95, 98, NT, and UNIX.

On-board management for the FE Switch DSA48+2G operates via the Management Module supplied with the switch. Management is accessed either in-band via Telnet or TCP/IP, or out-of-band via the serial console port interface.

Local console management can be used to configure a variety of network parameters as well as provide statistical and diagnostic information about an individual port or the entire device.

See it on the web at: www.dnpg.com/dr/feswitch48

Ordering Information

	Part #	Description	List Price
	DSA48-2G	Stand-alone 10/100 Mbps FE Switch – 48 fixed RJ45 ports, with 2 modular uplink slots	\$3,495
Uplink Modules	DSFE1-FX	1-port 100BASE-FX	\$1,495
	DSFE2-FX	2-port 100 BASE-FX	\$595
	DSGBE-LX	1-port 1000 BASE-LX	\$1,595
	DSGBE-SX	1-port 1000 BASE-SX	\$695
Redundant Power	DRPS1-AA	Single Redundant DC Power Supply Unit	\$595

Features

- Plug-and-play functionality
- Hot-swappable module replacement
- Eliminates the central processor for higher throughput without a common single point of failure
- Simple, graphical SNMP management
- Features a rich variety of module functionality, including repeater and bridge fiber-optic support and wide area routing, which permits links from the workgroup to other remote groups

The DEChub 90 workgroup chassis is the industry's only stackable and hub-based solution in one product. It is designed to support the communication needs of today's workgroups in small to mid-sized companies and expanding communications in corporate enterprise-networks.

Built as a multi-functional Ethernet-based backplane, the DEChub 90 chassis provides mounting, power, and ThinWire Ethernet backbone connection to accommodate up to eight Digital Networks 90-series modules. This family of modules includes a variety of Digital repeaters, access servers, bridges, wide area routers, and an SNMP management module. Each can be configured for use as a stand-alone device, a stackable in the MultiStack System, or a module in the DEChub 90 chassis. In addition, these modules are hot swappable.

See it on the web at: www.dnpg.com/dr/npg/dehub-mn.html



Ordering Information

Part #	Description	List Price
DEHUB-##	DEChub 90 chassis (includes power supply, rackmount brackets, documentation and one ThinWire cable)	\$790
DETRX-S#	MultiStack Unit – allows any one module to be utilized alone or stacked up to 16 units high (includes rackmount kit and integral power supply)	\$250
##, #	Indicates country variant for proper power cord	N/A

FDDIcontroller/PCI Adapters

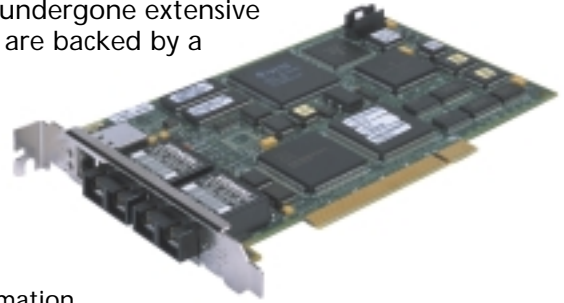
PCI FDDI adapters optimized for high throughput performance, even in heavy network traffic

Features

- Performance
 - High-performance, low-latency DMA chip supports high throughput and low CPU utilization
 - On-board CPU for SMT processing
 - 1 MB buffer RAM
 - Full-duplex capability
- Easy to install and use
- SNMP Manageable
- Full Suite of software drivers
- Variety of Platforms
- Three-Year Warranty

The Digital Networks FDDIcontroller/PCI adapters are ideal for heavily used FDDI networks. These 32-bit adapters feature an on-board CPU, DMA chip, and 1 MB buffer to support demanding high-bandwidth applications such as video, file transfer, and system backup operations – without taxing your systems. Full-duplex capability extends bandwidth up to 200 Mb/s.

These adapters are designed to work with a variety of platforms and are easy to install and use. They have undergone extensive interoperability and standards testing and are backed by a three-year warranty.



Ordering Information

Part #	Description	List Price
DEFPA-AC	FDDIcontroller/PCI – SAS MMF model	\$1195
DEFPA-DC	FDDIcontroller/PCI – DAS MMF model	\$1695
DEFPA-MC	FDDIcontroller/PCI – DAS UTP model	\$995
DEFPA-UC	FDDIcontroller/PCI – SAS UTP model	\$695

GIGAswitch/FDDI

GIGAswitch/FDDI for high-performance computing and high-performance network backbones

Features

- Reduces bottlenecks for multi-technology backbones with support for full-duplex FDDI, Fast Ethernet, and ATM
- Increases performance and reduces latency with optional IP packet switching, allowing for more efficient use of routers for firewalls and WAN access
- Reduces the cost of entry for high-performance switching with 2-port or 4-port packaged systems
- Protects investments with support for Fast Ethernet LANs and seamless growth from FDDI to multiple technologies

This multi-layer, multi-technology switch delivers industry-leading performance with nearly boundless scalability. The GIGAswitch/FDDI is the only FDDI switch that uses a crossbar switching fabric to handle the demands of multi-technology backbones, supporting FDDI, Fast Ethernet, and ATM technologies. It delivers plenty of bandwidth for network backbones, workstation farms, high-performance workgroups, disaster recovery/remote backup, and more.

The GIGAswitch/FDDI is designed for the demands of the backbone. Hot-swap capabilities and optional redundancy are available for primary hardware components. Dual, mirrored GIGAswitch/FDDI systems can be configured for absolute fail-safe operation. This system is built to support mission-critical applications, online transaction processing, or disaster-recovery schemes.

The GIGAswitch/FDDI is easy to manage. Using Digital Networks' *clearVISN* MultiChassis Manager, the network administrator can graphically configure ports and hunt groups, assign virtual workgroups, and manage adds, moves, or changes all from a single PC or UNIX workstation.

See it on the web at: www.dnpg.com/digital/dr/npg/defga-mn.html



Ordering Information

Part #	Description	List Price
DEFGA-FA	2-port GIGAswitch/FDDI system	\$24,400
DEFGA-EA	4-port GIGAswitch/FDDI system	\$25,500
DEFGA-DA	4-port GIGAswitch/FDDI system with 4 SAS MIC PMDs	\$27,500
DEFGL-AA	2-port SAS or DAS FDDI linecard	\$9,265
DEFGL-BA	4-port SAS only FDDI linecards	\$11,135
DEFGF-AA	4-port Fast Ethernet linecard for GIGAswitch/FDDI system	\$8,995
DEFGC-AA	2-port GS2000 linecard for GIGAswitch/FDDI and GIGAswitch/ATM systems	\$8,925

Features

- Mixed media support
- High density
- Designer look
- Flexible installation configurations
- Easy access
- Uses existing components

Digital Networks Support Services

Comprehensive, easily accessible support for customers and partners

Obtaining Warranty Service

To obtain Basic Warranty Service or additional information about our products and services, please call 1 877.341.9594 (8 AM to 5 PM ET, Monday through Friday) Outside the US: 1 978.684.1258
Or send email to:
digitalproducts@dnpg.com

Maintenance Service

Digital Networks customers can request maintenance services from Compaq Computer Corporation.

If a product warranty has expired, or for any reason a customer cannot get service coverage directly from Compaq Computer Corporation, Digital Networks will extend the basic warranty coverage at no additional charge until a future service offering is available.

Professional and Value-Added Services

If an end-user does not have a reseller or distributor who can directly provide professional and value-added services, Digital Networks will work through the reseller to provide those services. Simply call our hotline as indicated above.

Coming Soon

To enable total service solutions on a worldwide basis Digital Networks is in the process of establishing both Regional and Global Authorized Service Providers. For more information visit us online at:
www.dnpg.com/support/

DECconnect Systems Interconnect Products

Variety and reliability from the backbone to the desktop supporting the connection of Digital Networks products

Standards-based: DECconnect interconnect products are rigorously tested at the component and systems level to support your hardware investment. The products include Gigabit, ATM, FDDI, and Fast Ethernet-ready equipment cables supporting both twisted pair and fiber optic media. All are designed and manufactured to the highest quality for trouble free connections at the backbone and the desktop.



The Digital Networks Multimedia Outlet (MMO) is the reliable way to connect multiple users and services within a work group or office cluster. It is the ideal solution for users in a classroom or lab environment, providing flexible support of up to 12 independent communications ports.

Ordering Information

Part #	Description	Color
H3111-GE H3111-GF	(1) Multimedia outlet kit, for up to 8 data, voice or video user connections.	(Gray) (White)
H3111-GN H3111-GP	(25) Multimedia outlets (bulk pack), for up to 12 data, voice or video user connections. Bezels for inserts ordered separately.	(Gray) (White)

Note: all media inserts ordered separately

DECconnect provides the complete solution needed to connect Digital Networks and other standards-based equipment room and office products to the LAN.

For a complete listing of products go to:
www.dnpg.com/products/

Use the following cable assemblies for the office and equipment room:

Ordering Information

Port Type	Description	Option #
Console Port	DB9-DB9, Female Crossover, Null Modem Cable	BC29Q-10
	DB9, Female DB25, Male Modem Cable Console port adapter cable	BC29P-10
	Cabletron device to DECserver (RJ45 -RJ45), 7m	BN24V-07
	Adapter, DB9 male to RJ45 for Cabletron console port kit to DECserver	H8585-AF
10/100BaseT Crossover	10/100BaseT Crossover Cable, UTP	BN24Q-**
	10/100BaseT Crossover Cable, ScTP	BN28Q-**
10/100BaseT Data Ports	10/100BaseT Non-Crossover Cable, UTP	BN25G-**
	10/100BaseT Non-Crossover Cable, ScTP	BN26M-**
10/100BaseT "Y" Cable	<u>Dual Port</u> , Cat5e Non-Crossover cable supporting two 10/100BaseT ports on a single connection	BN24Y-**
10/100/1000 BaseT	(Cat5e) Color Gray, Non-Crossover Cable, UTP	BN25G-**-5E
100BaseFX 1000BaseSX	ST-SC, Multi-Mode, Duplex Cable	BN34A-**
	SC-SC, Multi-Mode, Duplex Cable	BN34B-**
	ST-ST, Multi-Mode, Duplex Cable	BN34C-**
GIGAswitch/ FDDI	FDDI-FDDI (MIC) Multi-Mode, Duplex Cable	BN24B-**
	FDDI (MIC) - ST Multi-Mode, Duplex Cable	BN24D-**
	FDDI (MIC) - SC Multi-Mode, Duplex Cable	BN34D-**
1000BaseLX	SC-SC, Single-Mode, Duplex Cable	BN34R-**
	ST-SC, Single-Mode, Duplex Cable	BN34S-**
	ST-ST, Single-Mode, Duplex Cable	BN34T-**

** Specifies available cable lengths.

digital

Corporate Products Partners Literature Support

Digital Networks

Digital Networks is a provider of proven innovative solutions that meet the networking and wiring needs of today's customers. Digital Networks offers multi-technology solutions that interconnect servers, desktops, office and manufacturing floor devices to support traditional business and web-based applications.

Corporate
 Links to Corporate
 Links to Products
 News
 Press Room
 Accounts
 Contact Us

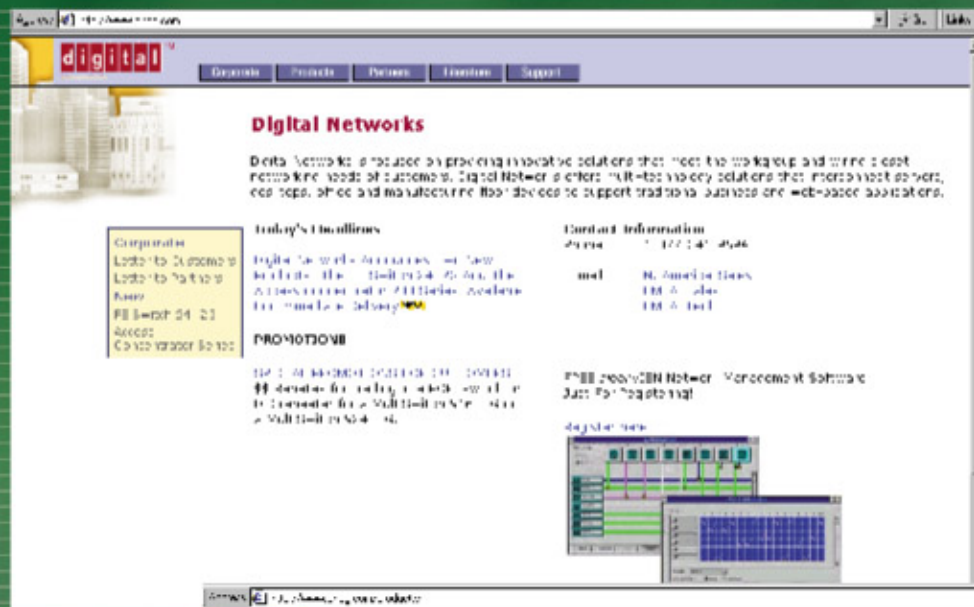
Today's Headlines
 Digital Networks Announces New
 Products - The MultiSwitch 900, the
 MultiSwitch 900 MultiSwitch 900
 MultiSwitch 900

Product Information
 MultiSwitch 900
 MultiSwitch 900
 MultiSwitch 900

PROMOTIONS
 MultiSwitch 900 MultiSwitch 900
 MultiSwitch 900 MultiSwitch 900
 MultiSwitch 900 MultiSwitch 900

Free MultiSwitch Network Management Software
 Just For Requesting!

Register Now



digital

Corporate Products Partners Literature Support

Digital Networks Offerings by Technology and Products

Ethernet
 Ethernet is a family of networking technologies that includes Ethernet, Fast Ethernet, Gigabit Ethernet, and 10 Gigabit Ethernet. Ethernet is a family of networking technologies that includes Ethernet, Fast Ethernet, Gigabit Ethernet, and 10 Gigabit Ethernet.

Fast Ethernet
 Fast Ethernet, or 100BaseT, is a family of networking technologies that includes Fast Ethernet, Gigabit Ethernet, and 10 Gigabit Ethernet. Fast Ethernet is a family of networking technologies that includes Fast Ethernet, Gigabit Ethernet, and 10 Gigabit Ethernet.

FDI
 FDI is a family of networking technologies that includes FDI, Gigabit Ethernet, and 10 Gigabit Ethernet. FDI is a family of networking technologies that includes FDI, Gigabit Ethernet, and 10 Gigabit Ethernet.

Products
 Ethernet
 Fast Ethernet
 FDI
 Gigabit Ethernet
 10 Gigabit Ethernet
 MultiSwitch 900

Search

News

Press Room

Accounts

Contact Us

digital

Corporate Products Partners Literature Support

Digital MultiSwitch 900 Switching System

Unmatched switching performance with flexible technology integration

The Digital MultiSwitch 900 system is the only switching chassis that can deliver multi-protocol switching performance regardless of networking technology. It is designed for wiring closet and data center configurations. Whether your switching requirements include Ethernet, Fast Ethernet, FDI, or ATM, the Digital MultiSwitch 900 maximizes network performance across all these technologies.

A Closer Look

Highlights

- Protects investments without hardware obsolescence. It's open technology. High-performance 5.6 Gb/s switching chassis design supports any cell or packet-based networking technology.
- Integrates fast, easy-to-use upgradability to add new leading-edge switching capabilities and LAN support without concern for obsolescence or compromised functionality.
- Relieves management with low-cost, easy-to-use policy-based management, providing comprehensive, easy-to-use network management in a single, integrated view of software applications.
- Ensures fail-safe reliability. It has swappable, full 1+1 redundant power system maximizes uptime for your network.

A Closer Look

The Digital MultiSwitch 900 system is the ideal solution for today's dynamic network environment. With its open technology 5.6 Gb/s switching and standards-based multi-protocol switching capability, you get a switching platform that easily integrates disparate, multi-vendor, shared and dedicated LANs. Non-blocking, low-latency, multi-protocol switching maximizes performance for today's dynamic network. And, with Digital's clearVSM policy-based management applications, you can manage complex, multi-technology networks through an easy, graphical interface from a single centralized management platform. The Digital MultiSwitch 900 system is the ideal solution for today's dynamic network environment.

www.dnpg.com



www.dnpg.com

DIGITAL NETWORKS

Digital Networks
50 Minuteman Road
Andover, MA 01810
U.S. 1.877.341.9594
Outside U.S. 1.978.684.1258